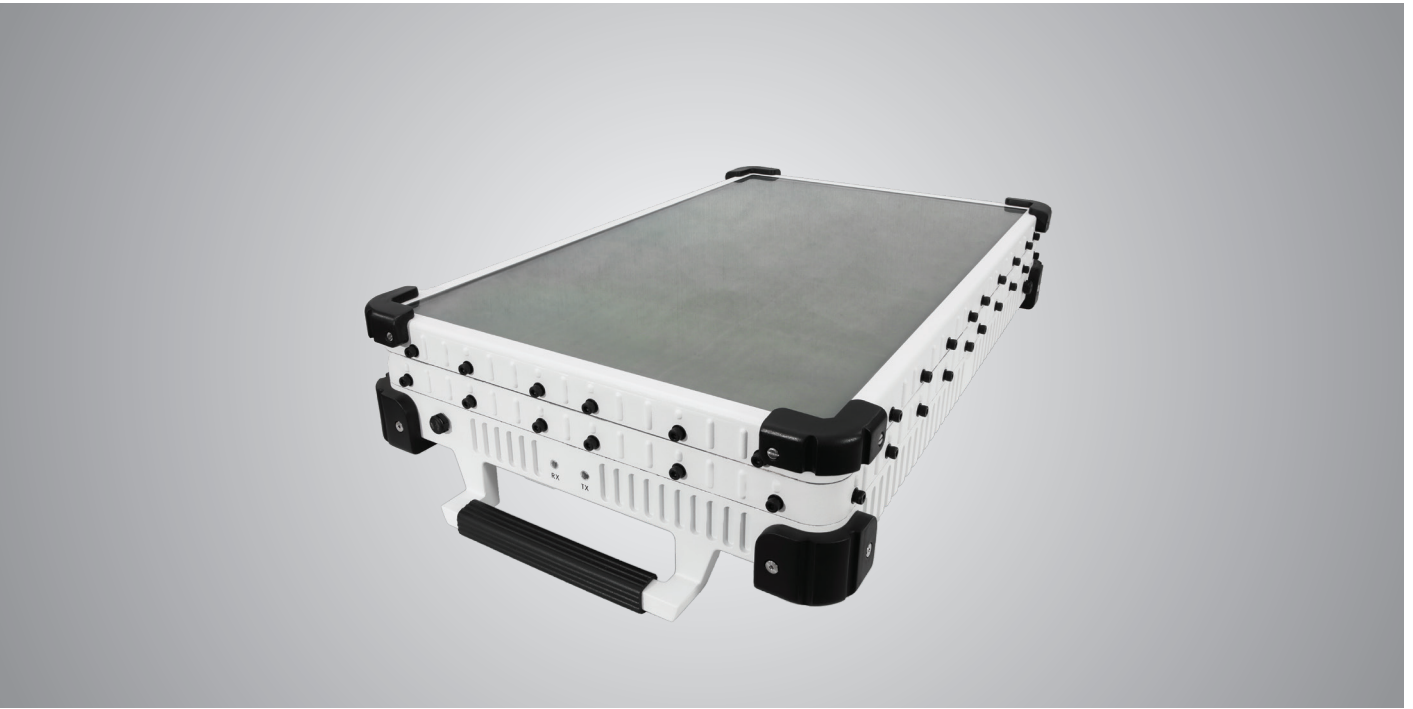


# Flat Panel Manpack



## Manpack Terminal

The Manpack SATCOM Terminal operates in Ku-Band and it is highly portable in a compact form factor suitable for a variety of tactical operational scenarios and applications.

It delivers high performance and is designed to be ruggedized for harsh environmental operation scenarios and quick deployment.

Given its innovative design, the compact and lightweight terminal offers full baseband functionality. Deployment of the Manpack terminal is simple, with minimal assembly of detachable parts and antenna alignment is easily accomplished. Full deployment time is achievable within minutes for rapid deployment in hostile environment.

### Key Features

- High efficiency planar array
- Highly compact and rugged
- Integrated encryptor (Info-assurance compliance)
- Integrated call manager (Call network ready)
- Assisted pointing ( via GPS aided GUI )
- Built-in digital compass
- Built-in GPS
- Built-in Gyro tilt sensor
- Built-in Wi-Fi and Bluetooth

## Technical Specifications

Performance	
Antenna Type	High-efficiency planar array
Transmit Frequency	13.75GHz to 14.5GHz
Receive Frequency	10.95GHz to 12.75GHz
EIRP (Typ)	39 dBW
Rx G/T (Typ)	8 dB/K
Tx Gain (Typ)	32 dBi
Antenna Elevation Range	30° to 90°
Polarisation	±90°
Deployment and Acquisition	<5min

Operating Condition	
Operating Temperature	0°C to +45°C
Operating Humidity	95% RH
Operational Wind Speed	30km/hour
Storage Temperature	0°C to +71°C
Ingress Protection	IP65
Environmental Qualification	MILSPEC 810G

Dimension	
Size	420L x 260W x 100H mm
Weight	8 Kg

Power Supply	
Battery Life	Continues transmission <2 hrs
AC Supply	96VAC ~ 260VAC (Optional)
DC Supply	12VDC

Base Band	
Integrated Modem	iDirect e950mp

Monitoring and Interfaces	
Data Line	MIL Standard Connector, WiFi, Bluetooth
Integrated Ecryptor	MIL Standard Connector
External AC / DC IN	MIL Standard Connector

